



Voice of the Shore

Congregation Torat El ~ Jersey Shore Jewish Center

Kislev/Tevet 5773

December 2012

Weekday Mornings

Sunday: 8:30 am
Monday-Friday: 8:00 am

Weekday Evenings

Monday-Thursday: 7:00 pm

Shabbat Evening Services
See Page 3 for times

Shabbat Morning Services
9:00 am



Look Inside...

Synagogue Contacts	2
Service Announcements	3, 4
Congregation Chanukah Party	4
Rabbi's Message	5
Our Synagogue Families	5
Religious School News	6
Adult Education	7
Meet the Bat Mitzvah	7
Sisterhood Chai Lites	8, 9
Men's Club Chanukah Party	9
Family Friday Night	10
Holiday Gift Cards	11, 12
Hazak Happenings	13
Jewish Book Month	14
Mitten Menorah	14
Yahrzeit Donations	14, 15
General Donations	15
Minyans	16
Ads	17-23
December Calendar	24

Congregation Torat El Chanukah Party

Sunday, December 9th - 10:30am - 12:30pm



See Page 9 for details

Save the Date!

Congregational Meeting



Sunday, December 16th

9:00am

Coffee and Nosh

See Page 4 for details

Torat El Professional Staff:

Rabbi.....Aaron Schonbrun
Cantor.....Bruce Siegel
Rabbi Emeritus.....Jacob Friedman
Education Director.....Ben Laskowitz
Executive Director.....Pam Cardullo
Bookkeeper/Admin.....Joanne Bass
Admin. Support.....Vickie Amron
Youth Advisor.....Jane-Rachel Schonbrun

Torat El Executive Board:

President.....Gary Zimmerman
First Vice President.....Andy Robins
Vice President.....Warren Goode
Vice President.....Suzanne Michel
Vice President.....Larry Shapiro
Vice President.....Dorothy Secol
Vice President.....Michelle Winters
Treasurer..... Steve Fineberg
Secretary.....Lisa Arnold

Torat El Board of Trustees:

Bill Belfer, Michael Breslow,
Maddy Cohen, Laurie Gross,
Lisa Guss, Seth Hertz,
Alyce Isaacson, Michelle Kaplan,
Lynne Kraft, Howard Lang,
Marc Liechtung, Rich Marlieb,
Linda Pickelny, Beverle Richelson,
Sherrie Robinson, Judy Rosner
Mark Steinberg, Martin Sukinik,
Toby Sukinik, Neil Weitzenkorn,
Alan Winters, Sonny Winters,

Judy Solomon, Sisterhood Pres.
Alan Rosenheck, Men's Club Pres.

Congregation Torat El Contact Information

President	Gary Zimmerman	732.531.4410
Sisterhood President	Judy Solomon	732.531.0833
Men's Club President	Alan Rosenheck	732.531.1424
Ritual Chair	Neil Weitzenkorn	732.984.7204
Education Chair	Sherrie Robinson	732.870.3253
Finance Chair	Steve Fineberg	732.229.9562
Membership Chair	Suzanne Michel	732.695.0258
Helping Hands & Chesed	Alyce Isaacson	732.870.1492
Fundraising Chair	Laurie Gross	732.531.0511
Library	Anne Siegel	732.531.4410
Information Technology	Howard Lang	zappohl@gmail.com
Security	Bill Belfer	732.922.3538
Hazak	Toby Sukinik	732.493.3719
Marketing/Public Relations	Maddy Cohen	732.778.3800
Agudath Achim Cemetery	Steve Scheer	732.531.7543
Beth El Cemetery	Alan Winters	732.222.2510
Youth Advisor	Jane-Rachel Schonbrun	youthgroup@torat-el.org
JNF Trees	Leah Zimmerman	732.229.8623
Contribution Cards	Beverle Richelson	732.493.1595
Gift Cards & Social Hall Rentals	Pam Cardullo	732.531.4410
Bulletin & Communications	Barbara Saint John	bulletin@torat-el.org
	Pam Cardullo	

Congregation Torat El Main Office**732-531-4410**

Rabbi Aaron Schonbrun	rabbi@torat-el.org	ext.13
Cantor Bruce Siegel	cantor@torat-el.org	ext.18
Pam Cardullo, Executive Director	pamc@torat-el.org	ext.10
Ben Laskowitz, School Principal	benlaskowitz@torat-el.org	ext.16
Joanne Bass, Bookkeeper	joanneb@torat-el.org	ext.11
Vickie Amron, Administrative	vickiea@torat-el.org	ext.12
Anne Siegel, Librarian	librarian@torat-el.org	ext.17

www.torat-el.org

Shabbat Evening Services

A Choice for the members of our Congregation

Kabbalat Shabbat Service
First & Third Friday of each month

Instrumental Musical Service
6:30pm

Family Friday Nights
Fourth Friday of each month

Family Service and Dinner
6:30pm

Kabbalat Shabbat Service
Second & Fourth Friday of each month

Traditional Service
2nd Friday - 8:00pm
4th Friday - 6:30pm

Yahrzeits are honored at Friday night services prior to the Yahrzeit date.

December Service Announcements...

Friday, December 7, 2012

Instrumental Shabbat Service 6:30 pm

Candles 4:12 pm

ANNIVERSARY BLESSINGS: Julie and Lawrence Rosenblatt

YAHREZITS: Manny Berkowitz, Maxwell Colby, Harry Cooper, Alex Cotler, Joseph Crawford, Mildred Crystal Esther Deitelbaum, Harold Eder, Vivian Forman, Marvin Friedman, Joseph Furie, Joseph Gaffin Harold Gitten, Emanuel Joseph, Shirley Kantor, Steve Kirsch, Jacob Krivins, William Kronengold, Kate Marowitz Joseph Mattes, Iris Maurer, Elizabeth Medwin, Barry Parnes, Betty Parness, William Parness, Marilyn C. Rosset Sadie Schlam, Irene Schreiber, Wesley L. Steinman, Lawrence Warm, Herman Wilk, Shirley Yaskulka

Saturday, December 8, 2012

Parasha: Bereisheet 39:1 –40:23
Shabbat Morning Service ~9:00 am
Jr. Congregation 10:15 am
Lunch and Learn—Kiddush luncheon
First night Chanukah

Haftarah: Amos 2:6 –3:8

Friday, December 14, 2012

Traditional Shabbat Services 8:00 pm
7th night Chanukah

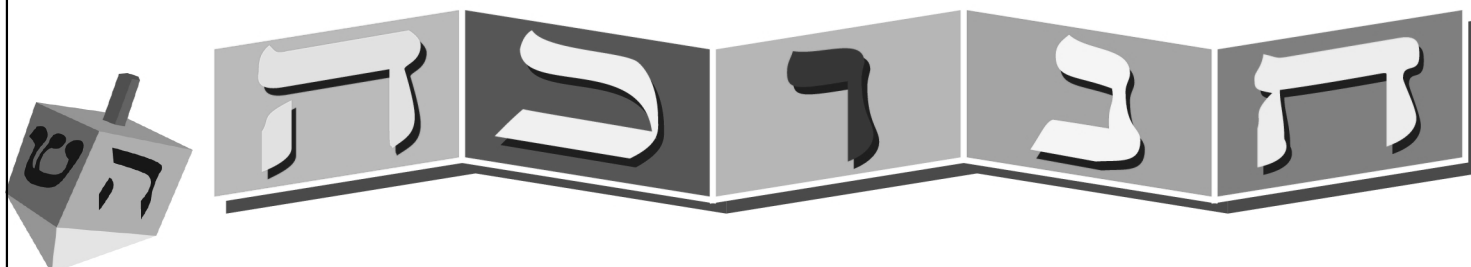
Candles 4:13 pm

ANNIVERSARY BLESSINGS: Marjorie and Stanley Cotler, Gloria and Anthony Gribin, Pam and Allen Hirsh, Rochelle and Moe Nagrod, Beverle and Howard Richelson, Sally and Zeke Rose

YAHREZITS: Jimmy Abrahams, Owen Lloyd Altman, Donald Arm, Allan Axelrod, Elaine Bloom, Greta Boden Abraham Mayer Brand, Emil Cohen, Anna Davis, Rae Donner, Esther Fleishman, Rita A. Friedman, Betty Fromer Minnie Ginsburg, Joseph Warren Gold, Adelaide Goldstein, Adrienne Gordon, Mildred Hirsch, Harry Kantor Marilyn Kaplan, Bernard Karasic, Beatrice Kraus, Pearl Krongelb, Ethel Lorman, Sally Meyer, Cecelia Ostroff Mylicent Press, Zimel Resnick, Yoseph Reuven, Sheldon Sacks, Reuben Samuel, Simon Samuel, Robert Schneider Nathan Schulman, Harry Schutzer, George Schwartzstein, Victor Shain, Rosalind Stern, Abraham Teitel, Ruth Wilk Bernard Yeamans

Saturday, December 15, 2012

Parsha: Bereisheet 43:16–44:17; Bemidbar 7:48–53
Haftarah: Zekharyah 2:14–4:7
Shabbat Morning Service ~9:00 am
8th night Chanukah



December Service Announcements...

Friday, December 21, 2012

Instrumental Shabbat Services 6:30 pm

Candles 4:16 pm

ANNIVERSARY BLESSINGS: Roberta and David Fiedler, Marlene and Matthew Schiff, Loretta and Harvey Slovin
Toby and Martin Sukinik, Harriet and Gary Wiser

Yahrzeits: Doris Anschelewitz, Avram Bercovicz, Samuel Bloom, Fred Boone, Marion Breuer
M. Harvey Brown, Lois Nelson Brownstein, Ken Curtis, Robert Deitch, David Dembling, Nelson Farber, George Fink
Harold Garfinkel, Norman Gayton, Tema Gerechoff, Jerry Goldstein, Max Gonski, Samuel Hipschman, Morris Kempler
Eugene Kirsch, Mortimer Kobb, Alice Kohnheim, Lily Laster, Irving Richmond, Ronald Rosen, Ernest F. Rosset
Max Sandberg, Mathilda Simha, Henry Singer, Abraham Slovin, Sylvia Smith, Bob Stone, Harry L. Vineberg

Saturday, December 22, 2012

Parsha: Bereisheet 46:28—47:27
Shabbat Morning Service ~ 9:00 am
Congregation 10:15 am
Kiddush luncheon following services

Haftarah: Yehezkel 37:15—28

Friday, December 28, 2012

Family Shabbat Services 6:30 pm
Family Service and Traditional Service
Congregational Family Dinner 7:15pm

Candles 4:20 pm

ANNIVERSARY BLESSINGS: Janet and Alan Cohen, Wendy and Joseph DiBenedetto

Yahrzeits: Milton Bernstein, Jerry Bornstein, David Cooper, Helen Dolgenas, Julius Droisen, Ludwig Flato
Abraham Geboff, Sam Goldstein, Frida Haber, Sophie Kaplan, Louis Kirsch, Theodore Kirsch, Leon Kotin, Annette Kurman
Michael Maltzman, Frank Marowitz, Gussie Michelson, Solomon Nanos, Stuart Nelson, Sol Reinman, Morris Reiter
Mildred Richelson, Lee Rubenstein, Charles Ruskin, Samuel J. Sarch, Sigmund Schreiber, Esther Singer, Nathan Spector
Ida Lippman Stern, Eva Stiftel, Fannie Tauber, Max Trauben, Marilyn Weinstein, Bertha Weiss, Shari Lynn Woda
Chiam Ben Zev

Saturday, December 29, 2012

Parsha: Bereisheet 49:27—50:26
Shabbat Morning Service ~ 9:00 am
Bar Mitzvah: Brian Bauer

Haftarah: Melakhim 2:1—2:12

Our Kiddush is sponsored by proud grandparents Helene and Mel Woda
In honor of their grandson, Brian, becoming a Bar Mitzvah

CONGREGATION MEETING/TORAT DONATION CEREMONY

Please join us for our semi-annual Congregation Meeting. We will be providing updates on a wide range of ongoing committee projects including finances, strategic planning and more!

Following our meeting there will be ceremony celebrating CTE's donation of Torat to synagogues world-wide! Some recipients will be here to receive their scrolls, express their thanks and share in the celebration!

Sunday, December 16th (Coffee and Nosh)
Minyan - 8:30am, Congregation Meeting - 9:00am, Ceremony - 10:30am

From The Rabbi's Study...

Increasing The Light Through The Work Of Our Hands

There is a famous debate in our tradition about the lighting of the Hanukkah. There is a discussion in the Babylonian Talmud (Shabbat 21b) concerning the proper order of lighting the Hanukkah. Shammai teaches that we should light all eight candles on the first night, and then take away one candle each night. But Hillel disagrees, teaching that we should start with one candle and increase the number of candles that are lit as the holiday progresses. Ultimately, our tradition sides with Hillel, choosing to have the Hanukkah symbolize the holiday's message that we should strive to increase light that we bring into the world around us.

This teaching has been on my mind in the weeks since Hurricane Sandy hit our shores. The devastation and destruction that hit our community and so many communities in New Jersey and New York is simply unfathomable. Many of us have participated in short term relief projects, and made donations to try and make a dent in the enormity of the recovery from this natural disaster. And yet there are times when we may feel defeated, humbled, and overwhelmed by the enormity of the task ahead.

At this time of year, when we are surrounded by more darkness each day, and when our frustration and exhaustion is beginning to show, along comes Hanukkah a to remind us of a valuable lesson. Each one of us can, and must, strive to bring a bit more light into the world with each day that we are given on this earth. As each day of Hanukkah goes by and we gather by the light of our Hanukkiyot, let us ask ourselves: What did I do today to bring more light into the world? Have I thought about Hurricane relief efforts over the past few weeks, or have I "moved on?" Do I even know what the needs are in our community and in neighboring communities? And if there are few tangible ways that I can help with hurricane relief, what else might I do to bring more light into our world?

Who needs my help and what can I do to bring more light into their lives.



We encounter many challenges in life, but the key is remembering that we must not become overwhelmed and each one of us can make a difference. Rabbi Tarfon famously taught that we are not obligated to complete the task, but neither are we free to ignore it (Avot 2:21). In other words, we must work daily to make a difference in this world and to help all who are in need. We must work tirelessly to bring light into the dark spaces of our world with a sense of optimism, purpose, and God's presence that can be found through the work of our hands.

There is a famous story that illustrates the point, adapted from "The Star Thrower" by Loren Eisely: There once was a wise man who was walking along the beach. One day as he was walking along, he noticed a girl picking up small objects and throwing them into the sea. As he came closer, he noticed that there were thousands of starfish that had washed up onto the shore. "Good morning!" the man exclaimed. "What are you doing?" The little girl replied: "Throwing starfish into the ocean." "Well, whatever are you doing that for?" replied the man. "You can't possibly make a difference, you can't possibly save them all!" The little girl looked up at the man and smiled. She picked up a starfish and threw it into the ocean and said: "Made a difference to that one!"

The message is clear. We each have the power to make a difference. We all have the power to bring more light into our world each and every day. This is our opportunity and our privilege as God's partner in this world.

Hag Urim Sameach, May this Hanukkah be a time of rebuilding, and may our Shore community be filled with light.



Our Synagogue Families

Baruch Dayan Emet

The Torat El family mourns the loss of:

Howard Gross, and extends condolences to his daughter, **Teri Rebhun**

Barbara Segner, and extends condolences to her husband, **Sam Segner**

Misti Lerner, and extends condolences to her mother, **Adele Lerner**

Milton Markowitz, and extends condolences to his daughter, **Barbara Saint John**

Rebecca Siegel, and extends condolences to her son, **Cantor Bruce Siegel**

Alan Jay Tucker, and extends condolences to his sister, **Barbara Goldenberg**

Rabbi Jacob Friedman, and extends condolences to his wife, **Alison Friedman**

Mazel Tov to:

Toby and Martin Sukinik on the marriage of their son **Howard** to **Debra Lazar**.

☆☆☆☆☆☆☆☆☆☆

The Torat El family wishes a speedy recovery to **Maddy Cohen**





RELIGIOUS SCHOOL CHAI LITES



ATTENTION ALL STUDENTS!!!

IT'S TIME FOR THE RELIGIOUS SCHOOL'S ANNUAL

CHANUKAH CRAFT EXHIBIT!!

MAKE AN ORIGINAL CHANUKAH-RELATED CREATION.

IT CAN BE A DRAWING, PAINTING, CLAY PROJECT, POSTER,
POEM, ETC...

AS LONG AS IT IS ORIGINAL AND CHANUKAH-RELATED.

PLEASE MAKE SURE THAT YOUR NAME IS CLEARLY
IDENTIFIABLE!!!

**ALL CREATIONS WILL BE DISPLAYED AT THE CHANUKAH PARTY
ON
SUNDAY, DECEMBER 9**

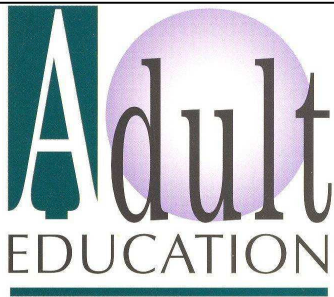
PRIZES WILL BE AWARDED AT THE LATKE PARTY!!

**PLEASE SUBMIT YOUR CREATION TO YOUR TEACHER OR TO THE
PRINCIPAL BY**

WEDNESDAY, DECEMBER 5!!!

Mark Your Calendars:

Sun. Dec. 2	2 nd /3 rd Grade Family Education Program
Sat. Dec. 8	Junior Congregation
Sun. Dec. 9	Chanukah Party following Religious School
Sat. Dec. 22	Junior Congregation
Sun. Dec. 23 thru Tues. Jan.1	No Religious School – Winter Break
Wed. Jan 2	Religious School Resumes



Fall/Winter 2012

Please call the temple office to register for all Adult Ed classes. 732-531-4410

"What Page Are We On, Part II: Analyzing the Torah Service and Musaf - Cantor Siegel continues with the second and final portion of his course examining in depth all aspects of the Shabbat morning service, history, structure, meaning, and melody. This year we'll analyze both the Torah Service and Musaf. The class is open and accessible to all, including those who didn't attend last year's sessions. Come and see why we do what we do on Shabbat. ***Sunday Mornings 10:00-11:00am (Why not come at 8:30am & help make a Minyan for someone saying Kaddish? It's a mitzvah!)***

Journey Through The Hebrew Bible - Do you want to learn more about the world's longest running best seller? Come and join Rabbi Schonbrun as we learn more about the Hebrew Bible (Tanakh). What is in the Tanakh? Where did it come from and how was it put together? Most importantly, what does the Tanakh have to teach us and how does our biblical text relate to our daily lives? Bring your questions and bring a friend! ***Monday Evenings, December 3, 10, 17th 7:30pm. (Why not come at 7pm and help make a Minyan for someone saying Kaddish? It's a mitzvah!)***

BYOB (Bring Your Own Bagel) Lunch and Learn - Are you looking for a way to add more meaning to your life? Join Rabbi Schonbrun and take one hour out of your busy week to engage in Jewish learning. This fall we will continue learning from the Ziegler Adult Learning Series produced by the American Jewish University exploring Jewish topics related to Social Justice. Join us and please bring a friend!
Wednesday Afternoons, 12:00-1:00pm

Living Room Learning with Rabbi Schonbrun - Not able or no time to come to the synagogue? You choose the topic and we provide the rabbi! Rabbi Schonbrun will lead a Chavurah at your home! Invite your friends and neighbors to join us! Groups of at least 10 requested. Limited amount of dates, so sign up now! 732-531-4410.

Vasher Koach to our Bar Mitzvah!

Hi my name is **Brian Bauer**. My Bar Mitzvah is on December 29, 2012.

I live with my three siblings, Jeffrey, Emily and Kevin who have already celebrated their Bar and Bat Mitzvah's. I also live with a dog named Molly, and my mom, Robin and my dad, Bob.

I devote three days of the week to prepare myself for my Bar Mitzvah. On Monday and Wednesday I go to Hebrew School and Tuesday is the day that I have Bar Mitzvah lessons with the Cantor. For my bar mitzvah project I fed the needy through an Interfaith Organization called Family Promises by bringing dinner that I helped to prepare and placing it on the table. Another project I did with a friend was to donate pet items and supplies to the Humane Society. We went around my neighborhood putting flyers in mailboxes asking for pet food, paper towels, old blankets, old sheets and other necessities for the loving animals that were abandoned and brought to the Humane Society Shelter. Next we had to go around collecting all the many, many items and it took two packed vans to deliver the supplies. I also participated in the Jewish Family and Children's Service Annual Thanksgiving Food Packaging Program. Furthermore, during the aftermath of Super Storm Sandy, I volunteered at Monmouth Race Track by assisting FEMA and the Monmouth County Sheriff's Department by issuing food, ice, water and other supplies that people so desperately needed. I also helped at the Salvation Army in Asbury Park by unloading a truck of donated supplies. Lastly after people moved out of shelters, I dismantled and cleaned cots for the Red Cross.

So as you can see, I enjoy volunteering many, many hours of my time because it makes me feel good and others truly benefit. Through Boy Scouts, I will continue to volunteer. As I get older, I will make volunteering a way of life.

I am looking forward to celebrating my Bar Mitzvah, with friends, family and the Congregation!



CTE Sisterhood Chai Lites

Temple Grams: To send a gram (\$5 each, checks payable to CTE Sisterhood) call Beverle at 732-493-1595.

Gift shop: Remember to support your SH Gift shop! Shop at your convenience. If you need help and no one is around, the office staff will gladly help you. If you don't see something you need and would like to place an order, please call **Gale Mark** at 732-493-3799.

Adie Gordon Religious School Fund and the Naomi Axelrod Garden Fund: Sisterhood has established these special funds, both operating on a continuing basis. To make a donation in honor of, or in memory of, etc., please call **Joan Edelsberg** at 732-918-0488.

Sisterhood's Torah Fund Supper

"Uri Uri"

Women's League & our Sisterhood have supported the Torah Fund Campaign for the Jewish Theological Seminary, its affiliates, and its students. The Torah Fund Campaign is celebrating its 70th Anniversary this year. Torah Fund contributes to the spiritual, aesthetic, and material well-being of the JTS community which provides many of our Conservative Rabbis, Cantors, Educators & Jewish Leaders for our future

Please bring a dairy/pareve entrée, salad, or dessert

When: 7:00pm Thursday, December 13th

Where: 132 Old Orchard Lane, Wayside Home of Andrea Fishbein

Cost: \$24 Receive 8 beautiful Torah Fund greeting cards as a thank you gift

RSVP: Andrea Fishbein 732-922-1923 or amfish53@aol.com

Call or email to reserve your TORAH FUND PIN!!!

Join the 2013 Torah Fund Club!

**** Contribute \$180****

Receive the "URI URI" Torah Fund Pin & a bonus pack of Torah Fund cards

****Bring your Tzedakah boxes to empty into our Torah Fund Tzedakah Barrel****

Thank You

Although "Sandy" arrived and canceled our bag day, our Rummage Sale was still a success! We want to thank everyone who set-up, worked the sale and cleaned up. We appreciate everyone who donated to the sale.

Also, thank you to everyone in the temple office and our custodial staff for their valuable help. We could not have done it without all of you! A special thank you to Jeanne Isaacson and Judy Solomon for their extra help.

Beth Cotler, Gayle Ardakanian; Co-chairs

Raffle News !!

Sisterhood's Min Pincoff Memorial Raffle continues to hold its monthly drawings, and each month a lucky ticket holder has received a welcome check. The winners during the 2012-2013 season thus far have been:

June	Cheryl Lipp,	Number	54
July	Donna Ginsberg		51
August	Ron Rosen		67
September	Madeline Schulman		47
October	Rochelle Nagrod		02
November	Sheryl Kaplan		24

There will be four more drawings this season. If you haven't as yet reserved a number, you may still do so. Just call Gayle Ardakanian (732-493-8877) or Phyllis Schwarz (732-988-0928). The cost will be \$40.

PLEASE NOTE: To accommodate Men's Club, who will have one of their own raffles in December, Sisterhood has cancelled our December drawing. We have therefore added an April drawing, not previously listed. The four remaining drawings are scheduled for January 3, 2013, February 7, 2013, March 7, 2013, and April 4, 2013.

GOOD LUCK TO ALL OUR TICKETHOLDERS!

Congregation Torat El Chanukah Party

Sunday, December 9th - 10:30am - 12:30pm



**Come one, come all to the
annual Chanukah Party!**

**All are welcome to attend,
bring your family and friends
along to join in the fun!**

**No RSVP necessary
No charge!**

Men's Club Famous Latkes

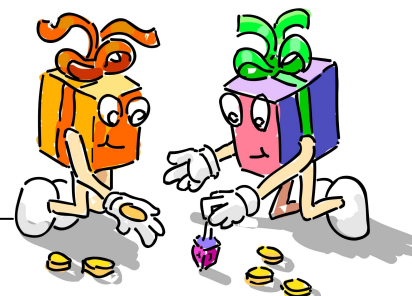
Yummy treats from

Sisterhood

Dreidel Games

50/50 Drawing

**Bring your own menorah and candles. We will light them
together in a ceremonial sign of community.**



We will be selling latkes to take home. To pre-order please complete the form below:

Name: _____

Phone/E-mail _____

I want to order _____ dozen(s) latkes @ \$10.00 per dozen.

Please send this form to the temple office C/O Men's Club by December 5

You can also purchase them to go at the Chanukah Party, while supplies last!

Congregation Torat El

Family Friday Nights :

A Shabbat To Renew, Rejoice & Relax



Have you had a long week? Are you looking for a way to bring a little bit of Shabbat into your life? Bring your family and friends and join us for an evening of supper, schmoozing, and spirituality.

Our family friendly service features songs, stories and prayer.

Our main service is a traditional Shabbat service.

Shabbat dinner to follow services. Chinese Food this month!

Come as you are!! Don't worry about getting dressed up!

We look forward to seeing you!

Friday, December 28th ~ 6:30pm

Please note that both services begin at 6:30pm and then join together for dinner.

Dinner Reservation for Friday, December 28th to be returned NO LATER THAN December 21st!
Please return to the temple office at 301 Monmouth Road, NJ 07712

Name _____ Phone _____
Email _____ Attending Family Service _____ Main Service _____

Adults @ \$15 _____ # Children 13 and under @ \$9 _____ \$40 per family Max

Amount Enclosed: \$ _____



CTE MAKES HOLIDAY SHOPPING FOR GIFT CARDS EASY AS 1-2-3!!

Choose from hundreds of retailers for all of your gift card shopping needs. This service is available all year round, not just for the holidays. It's as easy as 1-2-3...

1. Choose the retailer(s) you would like to purchase gift cards from
2. Make your check (sorry credit cards not accepted) payable to CTE
3. Pick up your gift cards

On the next page you will see an order form and list of just some of the participating retailers. If you don't see something on there just call the Temple office and we'll let you know if it's available. You can also check the gift card website by visiting www.glscip.com. Click on order scrip and browse by vendor name or categories.

Fundraising made easy:

By purchasing your gift cards through the Temple, not only do you eliminate the need to run from store to store but you also allow the Temple to earn a percentage of your purchases without it costing you anything additional!

Don't forget...make checks payable to Congregation Torat El

RETAILER LISTING/ORDER FORM:

Check	Retailer	Denominations Available	# Card(s) Requested	Check	Retailer	Denominations Available	# Card(s) Requested
<input type="checkbox"/>	Amazon.com	\$25/\$100	_____	<input type="checkbox"/>	Kohls	\$25/\$100	_____
<input type="checkbox"/>	AMC/Loew's Theatres	\$25	_____	<input type="checkbox"/>	Lands' End	\$25/\$100	_____
<input type="checkbox"/>	American Eagle Outfitter	\$25	_____	<input type="checkbox"/>	Limited	\$25	_____
<input type="checkbox"/>	American Express	\$25/\$100/\$200	_____	<input type="checkbox"/>	LL Bean	\$25/\$100	_____
<input type="checkbox"/>	Babies R Us	\$20	_____	<input type="checkbox"/>	Lord & Taylor	\$25	_____
<input type="checkbox"/>	Banana Republic	\$25/\$100	_____	<input type="checkbox"/>	Lowe's	\$25/\$100/\$500	_____
<input type="checkbox"/>	Barnes & Noble	\$10/\$25/\$100	_____	<input type="checkbox"/>	Macy's	\$25/\$100	_____
<input type="checkbox"/>	Bath & Body Works	\$10/\$25	_____	<input type="checkbox"/>	Marriott Hotels	\$50/\$100	_____
<input type="checkbox"/>	Bed, Bath and Beyond	\$25/\$100	_____	<input type="checkbox"/>	Marshalls	\$25/\$100	_____
<input type="checkbox"/>	Best Buy	\$25/\$100/\$250	_____	<input type="checkbox"/>	Nike	\$25	_____
<input type="checkbox"/>	Bloomingdales	\$25/\$100	_____	<input type="checkbox"/>	Old Navy	\$25	_____
<input type="checkbox"/>	Boscov's	\$25	_____	<input type="checkbox"/>	Payless Shoes	\$20	_____
<input type="checkbox"/>	Brooks Brothers	\$25	_____	<input type="checkbox"/>	Pep Boys	\$20	_____
<input type="checkbox"/>	Build-A-Bear Workshop	\$25	_____	<input type="checkbox"/>	Pier I Imports	\$25	_____
<input type="checkbox"/>	Burlington Coat Factory	\$25	_____	<input type="checkbox"/>	Popcorn Factory	\$25	_____
<input type="checkbox"/>	Champs Sporting Goods	\$25	_____	<input type="checkbox"/>	Radio Shack	\$25	_____
<input type="checkbox"/>	Claire's Accessories	\$10	_____	<input type="checkbox"/>	Regal Cinema	\$25	_____
<input type="checkbox"/>	Container Store	\$25/\$100	_____	<input type="checkbox"/>	Sears	\$25/\$100/\$250	_____
<input type="checkbox"/>	Crate and Barrel	\$25/\$100	_____	<input type="checkbox"/>	Sephora	\$20	_____
<input type="checkbox"/>	CVS Pharmacy	\$25/\$100	_____	<input type="checkbox"/>	Sports Authority	\$25/\$100	_____
<input type="checkbox"/>	Dicks Sporting Goods	\$25/\$100	_____	<input type="checkbox"/>	Staples	\$25/\$100	_____
<input type="checkbox"/>	Disney	\$25/\$100/\$1000	_____	<input type="checkbox"/>	Sunglass Hut	\$25	_____
<input type="checkbox"/>	Dunkin Donuts	\$10	_____	<input type="checkbox"/>	Talbot's	\$25	_____
<input type="checkbox"/>	Eddie Bauer	\$25	_____	<input type="checkbox"/>	TJ Maxx	\$25/\$100	_____
<input type="checkbox"/>	Express	\$25	_____	<input type="checkbox"/>	Toys R Us	\$20	_____
<input type="checkbox"/>	Footlocker	\$25	_____	<input type="checkbox"/>	Wawa	\$25/\$100	_____
<input type="checkbox"/>	Gap	\$25/\$100	_____	<input type="checkbox"/>	William Sonoma	\$25/\$100	_____
<input type="checkbox"/>	Gymboree	\$25	_____	<input type="checkbox"/>	Zappos	\$25/\$100	_____
<input type="checkbox"/>	Harry & David	\$25	_____				
<input type="checkbox"/>	Home Depot	\$25/\$100/\$500	_____	<input type="checkbox"/>	Shop Rite	\$25/\$100	_____
<input type="checkbox"/>	Home Goods	\$25/\$100	_____				
<input type="checkbox"/>	Hyatt Hotels	\$50/\$100	_____				
<input type="checkbox"/>	I-Tunes	\$15/\$25	_____				
<input type="checkbox"/>	J. Crew	\$25	_____				
<input type="checkbox"/>	JC Penney	\$25/\$100	_____				

There are many, many restaurants, grocery stores and additional retailers who participate in this program. Please contact the temple office for information or visit www.glscrip.com for a complete retailer list.

Name _____

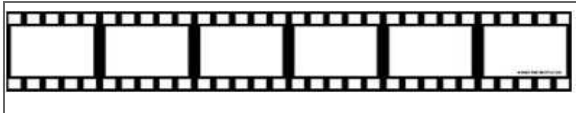
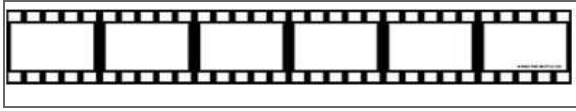
Address _____

Phone _____ Email _____

Cards Requested _____

Total Amount Enclosed \$ _____

Hazak Happenings



Sunday, December 16th 3:30pm

"Noodle"

Join us for a great afternoon!

Movie and Kosher Chinese Dinner

Hazak members \$8 ~ Guests \$10

ADMITTANCE BY RESERVATION ONLY!

RSVP to the temple office at 732-531-4410 by Dec. 10th

At thirty-seven, Miri is a twice-widowed, El Al flight attendant. Her well-regulated existence is suddenly turned upside down by an abandoned Chinese boy whose migrant-worker mother has been summarily deported from Israel. The film is a touching comic-drama in which two human beings, as different from each other as Tel Aviv is from Beijing, accompany each other on a remarkable journey, one that takes them both back to a meaningful life.

Congregation Torat El Family Friday Nights : A Shabbat To Renew, Rejoice & Relax

*Have you had a long week? Are you looking for a way to bring a little bit of Shabbat into your life?
Bring your family and friends and join us for an evening of supper, schmoozing, and spirituality.*

Our family friendly service features songs, stories and prayer.

Our main service is a traditional Shabbat service.

Shabbat dinner following services.

SCHEDULE OF FAMILY FRIDAY NIGHTS:

December 28th - *What else this time of year? Chinese Buffet*

January 25th - *Breakfast for Dinner (Bagels, Lox & More)*

February 22nd - *There has to be at least 1 Chicken Dinner*

March 22nd - *Soup, Salad and Stuff*

April 26th - *Mama Mia! Pizza/Pasta Dinner*

May 31st - *Fire up the Barbecue*





Jewish Book Month ~ November 7th - December 7th

Please contribute to the CTE Library Children's Collection and honor your children, parents, grandparents, and any other special people in your life.

\$18 per honoree

Whatever is purchased with your gift will have a bookplate inscribed with the information you provide and will be listed in the bulletin. Bring or send your checks with this form to the Temple office during Jewish Book Month. Happy Chanukah!

Name of donor(s): _____ To honor: _____

Inscription for book plate: _____

Please make checks payable to Congregation Torat El Library for \$18 per honoree. Total: \$ _____

MITTEN MENORAH November 7th – December 7th

Will be in the Religious School lobby
to hold your donations of:

MITTENS, HATS, GLOVES AND
SCARVES

Purchased or hand made
Warm is what counts

Happy Chanukah



We gratefully acknowledge the following yahrzeit donations...

BERTHA CRAWFORD by Janice and Paul Holub
MAX BLOCK by Janice and Paul Holub
SHELDON HORVITZ by Frimet Wilk
STEPHEN SHAPIRO by Barry Shapiro and Alison Block
ETTA HAIKEN by Jodi and Art Vasen
RALPH ZIMMERMAN by Lonnie Zimmerman
FRANCES ZIMMERMAN by Lonnie Zimmerman
ELLEN DEMBLING by Bernard and Myrtle Dembling
HYMAN DEMBLING by Bernard and Myrtle Dembling
JOSEPH FRIEDLAND by Joan and Ira Kreizman
IRVING CHIDNOFF by Gloria and Noel Kirchner
FRIEDA REISCH by Margo, Arnold and Austin Gelfman
LOUIS ZIMMERMAN by Leonard Zimmerman
MAX ARONOWITZ by Cindy and Lewis Fisher and Family

CHARLOTTE GERSHON by Simon Gershon
FANNY LEFFLER by June Garelick
IRVING CERANKA by Arlene Saltz
MORRIS SCHWARTZ by Charlotte Ginsburg
IDA FISHBAIN by William Fishbein
HARRIET PAGE by Bernard and Myrtle Dembling
HELAYNE BERGER by Harriet Popok
ROSALIND STERN by Fred Stern and Family
ZIPPORAH EPSTEIN by Judy, Steve, Mollie, Liz & David Bodnovich
BEN ZIMMERN by Rhoda Poretzky and Family
BETTY CASPER by Irene Lam
SIEGFRIED WEITZENKORN by Neil & Marcia Weitzenkorn & Family
CHARLOTTE GERSHON by Eugene Lowy
EMIL WEISS by Helen and Elliott Schlam and Family

Donations

General Fund

In Memory of:

Grandmother Goldie Barach
Sam Segner
Grandfather Schmuell Barach
Sam Segner
Sari Barach Beginski
Sam Segner
Bobby Segner—wife of Sam Segner
Madeline and Joel Schulman
Barbara and Robert Isaacson

In Honor Of:

Emma Vasen—daughter of Dr. Jodi and
Dr. Art Vasen—Mazel Tov on becoming a
Bat Mitzvah
Barbara Arnold
Jonah Bass—grandson of Paula and Steve
Bass—on becoming a Bar Mitzvah
Fred and Sandy Singer

Speedy Recovery:

Margo Gelfman
Cheryl and Al Lipp and Family
Zeke Rose
Myrtle and Bernard Dembling
Pamela Segner
Sam Segner
Karen Segner
Sam Segner

Paul Morris Liturgical Music Fund

In Memory Of:

Paul Morris
Sheila Morris

Magdalena Stern Holocaust

Memorial Fund

Speedy Recovery To:

Rabbi Jacob Friedman
Sandy and Ronnie Rosen

In Honor Of:

Ari Richelson—son of Beverle and Howard
Richelson—receiving his Doctorate
Sandy and Ronnie Rosen

Contribution Cards

In Honor Of:

The marriage of Howard Sukinik—son of
Toby and Martin Sukinik—to Debra Lazar
Iris Kellhoffer
Jonah Bass—grandson of Paula and Steven
Bass—becoming a Bar Mitzvah
Terry and Irv Zimmerman

Temple Grams

In Honor Of:

Sophy Kirsch moving into her new home in
Seabrook Village
Janet, David, Michelle and Rachel Attner
The engagement of Dr. Joni
Feldbaum—daughter of Hal and Judith
Feldbaum—to Matthew Smith
Janet and David Attner and Family
Luke—new great grandson of Rita and
Morris Ginsburg
Charlotte Ginsburg

Speedy Recovery:

Rabbi Friedman—thinking of you a lot
Beverle and Howard Richelson

Morris Bloom Fund

In Memory of:

Howard Gross—father of Teri Rebhun
Blanche Schorr
Amy and Nathan Brockstein
Mark, Rachel and Lisa Steinberg
Bunny Bloom

Rabbi's Discretionary Fund

In Honor Of:

Wishing everyone at Congregation Torat El a
very Happy Thanksgiving. We are all safe.
Dorothy Dweck
Jonah Bass becoming a Bar Mitzvah
and to help those affected by Hurricane
Sandy
Sharon Sigman Girard

Adie Gordon Fund

In Memory of:

Fanny Osher
Michael Gordon
Samuel Osher
Michael Gordon
Misti Lerner
Michael Gordon

We gratefully acknowledge the following yahrzeit donations...

BERNARD GINSBERG by Dr. and Mrs. Ferris Ginsberg
MARTIN ROMAN by Barbara and George Knezek
ESTHER SCHULMAN by Madeline and Joel Schulman
ALEX KAUFMAN by Arlene and Don Brodie
PEGGY KAUFMAN by Arlene and Don Brodie
ALBERT KAYE by Samuel Kaye
DAVID BAWNIK by Nancy and Marshall Silver
REGINA KORNBLOTH by Lee and Sol Leibel
SYLVIA WILK by Carol and Stuart Wilk
DANIEL GOLD by Charlotte Gold
MORRIS TAUBER by Arthur and Jean Tauber
KATHERINE STAHL by Lillian Goldenberg
ANNA DAVIS by Helene and Mel Woda
JULIUS GREENHUT by Greta Adler
BETTY CASPER by Irene Evanoski

FRANK SCHWARTZ by Charlotte Ginsburg
MORRIS WIZANSKY by Alan C. Winters
BESS WIZANSKY by Alan C. Winters
ESTELLE EZECHIEL by Barbara and David Saint John
SAMUEL DRAPKIN by Honey and David Ornstein
HERMAN WILK by Frimet Wilk
FANNIE TAUBER by Arthur and Jean Tauber
ROSALIND STERN by Lawrence Stern
RUTH WILK by Ilene and Steven Schwaber
DONALD ARM by Ellie Arm
OWEN LLOYD ALTMAN by Joyce and Joseph Kahn
MARION BREUER by Sylvia Reich
RUBEN PELLMAR by Monte and Randi Pellmar
HAROLD MARGULIS by Joan and Floyd Krengel

Minyan Needs Your Help...

Please observe your yahrzeit date by attending minyan at 7:00pm the night before and/or the 8:00am minyan the day of your yahrzeit. In an effort to ensure that our members are able to say Kaddish, we are asking the following people to please take a half hour out of your week to join us at our minyan services.

Monday, December 3rd

Joseph Marx
Murray Marx
Steven & Nancy Maurer
Stanley & Bobbi Meckler
Judith Meisels
Myrna Meisner
Linda Merrill
David & Adrienne Messner
Ned & Fran Meyer
Stuart & Robin Meyer
Leo & Frances Meyers
Gary & Suzanne Michel
Gilda Michnoff
Beatrice Milberg
Steven & Carol Miller
Robert Miller
Norbert & Eleanor Miller
Allen & Hagit Morgan
Abe Morgenstern
Jonathan & Ann Morris
Arnold & Phyllis Morris
Alan & Meryl Morris
Sheila Morris
Moe & Rochelle Nagrod
Steve Nelson

Monday, December 10th

Ila Nelson
Myrna Netkin
Brian & Lisa Neuwirth
Rhonda Newman
Donald & Deborah Nissim
Jeffrey & Staci Nussbaum
Esther Nussdorf
Jeffrey & Melissa Osofsky
Fred Paperth
Judy Parnes
Sandor & Barbara Paskin
Monte & Randi Pellmar
Jean Perkins
Norman & Sondra Pickelny
Jeffrey & Linda Pickelny
Bert & Regina Pickover
James & Suzanne Pincus
Mark & Victoria Pirogovsky
Herb & Harriet Popok
Sidney & Marlene Poretsky
Rhoda Poretzky
Ilene Posnock
David & Lesli Poznak
Lynne Prager
Mildred Przytyk

Monday, December 17th

Phyllis Raab
Bill & Karyn Raby
Seymour & Gloria Rachles
Robert & Teri Rebhun
Fran Rediker
Marc & Tracey Rediker
Russell & Laurie Rediker
Thomas & Nancy Redman
Richard & Lisa Reich
Sylvia Reich
William & Linda Reinman
Lee Reiter
Jules Resnick
Steven & Diane Resnick
Howard & Beverle Richelson
Richard & Marjorie Richter
Cynthia Roberts
Andrew & Michele Robins
Sherrie Robinson
Leonard Rokaw
Zeke Rose
Marvin & Marilyn Rosen
Ronald & Sandra Rosen
Shari Rosen

Monday, December 24th

Roz Rosenblatt
Alan & Jackie Rosenheck
Bernard & Bernadine Rosenthal
Rick & Judith Rosner
Stanley & Elaine Rubenstein
Lucille Rubin
Kenneth & Deborah Rubin
Jody Rubin
Steven & Amy Rubin
Joel Rubin
Lynne Rubin
Jerry Russell
Elaine Rutman
Milton & Shirley Sabin
Marcia Sacks
Elliott & Judy Safian
Susan Sager
Barbara Saint John
Alan & Ava Salowe
Arlene Saltz
Debbie & Ira Samilow
Myron & Ellen Samuel
Steven & Abby Scheer



CTE Minyan Needs Your Help

Our minyanaires are a small group of dedicated individuals who attend minyan services to be there for all of us. **NOW** is **OUR** turn to show we care! Please mark your calendar to be sure you attend one of the minyan services this month.

Thank you!

Monday—Friday ~ 8 am
Monday—Thursday ~ 7 pm
Sunday ~ 8:30 am



ATTENTION ALL TEMPLE BETH EL CEMETERY PLOT OWNERS

We will be making some changes to our cemetery software and want to be sure our database is as accurate as possible. If you own plots at the Temple Beth El Cemetery please provide me with documentation confirming plot locations. You can email me at pamc@torat-el.org, mail it to the office at 301 Monmouth Road Oakhurst, NJ 07755 or drop it off at the temple during business hours (Monday-Thursday 8am-5pm, Friday 8am-2pm). Thanks so much!

Pam Cardullo



Howard N. Guss, DO, FACP, AGAF Gagan D. Beri, MD

BOARD CERTIFIED GASTRO INTESTINAL & LIVER DISEASE

COLON CANCER SCREENING
REFLUX / BARRETT'S ESOPHAGUS
CELIAC DISEASE / IRRITABLE BOWEL SYNDROME
NON-SURGICAL HEMORRHOID TREATMENT

3200 Sunset Avenue, Suite # 208 | Ocean, NJ 07712
Phone (732) 775-9000 | Fax (732) 775-6660



CRA Site Improvement, Inc. ***Complete Site Development***

Christopher M. Aldarelli Sr.

PO Box 2092
Ocean, NJ 07712

732-496-3155
Fax 732-774-1219
crasiteimprvmnt@optonline.net

Complete Lawn Care and Landscaping Services
Custom Gardens • Walkways • Decks and Patios
Sprinkler Installation and Irrigation Systems
Renovations • Home Improvement

ISRAEL BONDS FOR HANUKKAH



eMITZVAH
BOND*

MAZEL TOV
BOND

GIVE THE GIFT OF ISRAEL

Purchase Israel Bonds Online · israelbonds.com



Development Corporation for Israel/Israel Bonds

Linda Schmidt, Registered Representative

6245 Town Center Way · Livingston, NJ 07039

973.712.1408 · 800.404.3235

linda.schmidt@israelbonds.com · metronj@israelbonds.com



*Available for purchase online only

This is not an offering, which can be made only by prospectus. Read the prospectus carefully before making to fully evaluate the risks associated with investing in Israel bonds. Member FINRA



www.isaacsonorthodontics.com

ISAACSON ORTHODONTICS

ORTHODONTICS and DENTOFACIAL ORTHOPEDICS
CHILDREN and ADULTS

ROBERT J. ISAACSON, D.D.S. - Spec. Per. # 2018

RICHARD D. ISAACSON, D.M.D. - Spec. Per. # 3453

JAMES A. ISAACSON, D.M.D. - Spec. Per. # 3500

West Long Branch

103 Parker Road
New Jersey 07764

(732) 870-8077

Matawan

160 Main Street
New Jersey 07747

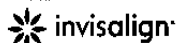
(732) 566-4005

Middletown / Red Bank

79 Oak Hill Road
New Jersey 07701

(732) 842-3133

PREMIER PROVIDER



Member
American Association of
Orthodontists

G & G Realtors

236 Norwood Ave.
Oakhurst, NJ 07755

732-531-2000

GandGRealtors.com

Residential & Commercial
Sales, Rentals &
Property Management

Voted: "Best of The Best"
Real Estate Agency by
The Asbury Park Readers' Choice Awards
12 years running



Celebrating our 4th anniversary in
the new office!

Nancy and Irwin Gerechhoff
Abby and Steven Scheer
Samantha Scheer



Successfully managing
real estate transactions
for 46 years



Insurance Excellence Since 1930

E&K Agency, Inc. was established at the
Jersey Shore with the goal to provide
cost-effective insurance programs and
professional services. For more than
80 years the Agency has followed the motto:

**Service... On Time,
On Target and Ongoing**

Expert Advice, Multiple Carriers
Best Price And Coverage

E&K Agency Inc.

PERSONAL & COMMERCIAL Insurance

PERSONAL

- Automotive
- Homeowners
- Coastal Homeowners
- Boats, Marine Toys
- Jewelry, Fine Arts, Collectibles
- Life, Health, Long-Term Care
- Umbrella Liability

COMMERCIAL

- Business Package
- Auto/Fleet
- Workers Compensation
- Employee Benefits
- Professional Liability
- Contractor Insurance
- Manufacturers
- Condo Associations

Instant AUTO Quotes
www.e-kautoinsurance.com

Call us or go online 732-389-6000 www.e-kinsurance.com

Victoria Commons

PO Box 600; 613 Hope Road, Eatontown, NJ 07724

Leisure Center

Airport Road & Route 70 West, Lakewood, NJ 08701

The Law Offices of Harvey J. Jacob

Harvey J. Jacob, JD, LL.M. (Tax)
Member NJ & PA Bars

Estate Planning • Wills • Living Wills • Trusts
Guardianships • Special Needs Trusts
Estate Administration • Estate Litigation
(No charge for initial consultation)

Serving South Jersey & Monmouth County

1814 Route 70 East - Suite 350
Cherry Hill, NJ 08003
856.673.4060
By appointment only

12 Christopher Way - Suite 200
Eatontown, NJ 07724
732.918.8575
By appointment only

8 Violet Drive
Ocean Township, NJ 07712-3276
732.918.8575 866.939.WILL
Fax 609.482.8219 HJJESQ@HarveyJacobLaw.net

Life happens. Let's talk about it.



**ELDER
LIFE
MANAGEMENT, INC.**

931 West Park Avenue
Ocean, NJ 07712
(732) 493-8080
Fax (732) 493-8810

Judith S. Parnes, L.C.S.W.,
C.M.C. Executive Director


When you or someone you know can no longer do it all...

- ◆ Consultation and planning
- ◆ Management of personal affairs and finances
- ◆ Financing the cost of Long Term Care
- ◆ Counseling services, accepting Medicare assignments
- ◆ Alternative living arrangements
- ◆ Post-hospital discharge planning
- ◆ Coordination of community programs
- ◆ Home health care

CALL ELDER LIFE MANAGEMENT

For an appointment in our offices or in the comfort of your own home.

(732) 493-8080



Phone : 732.874.0755
Fax : 732.214.0555


Heritage Plaza
228 Ryders Lane
Milltown, NJ 08850

www.18CaratCaterers.com

Jesse Reitner
JR18CaratCaterer@aol.com

**GOURMET KOSHER CATERING
FOR ALL LIFE'S EVENTS**

Your Kosher Indulgence



**EAT IN or TAKE OUT
DELIVERY AVAILABLE
CATERING FOR ALL OCCASSIONS**

HERITAGE PLAZA
228 Ryders Lane
Milltown, NJ 08850
Phone: 732.214.8900
Fax: 732.214.0555
www.loxstockanddeli.net

**WE ARE COMMITTED TO PROVIDING
THE HIGHEST QUALITY DENTAL CARE
FOR THE ENTIRE FAMILY**

**WILLIAM GRILL, DMD
BELINA GRILL, DMD
GENERAL & COSMETIC DENTISTRY**

Fala-Se Portugês & Se Habla Español
BLEACHING • BONDING • VENEERS



Deal -110 Norwood Avenue 732-531-3311

- ROOT CANALS • CROWNS & BRIDGES
 - IMPLANTS • DENTURES • EXTRACTIONS
 - NEW PATIENTS WELCOME**
 - WE WORK WITH MOST INSURANCE PLANS
 - EMERGENCY DENTAL CARE
- Convenient Parking • Evening & Weekend Hours Available
• Strict Sterilization Techniques

FREE DELIVERY ANYWHERE IN NEW JERSEY

(908) 925-3909

דלינג



Deli-King of LINDEN

Delivers To Your Area FREE • Seven days A Week
Call (908) 925-3909 to order

ASK ABOUT OUR COMPLETE HOLIDAY MEALS FOR: Rosh Hashonah • Yom Kippor • Passover • Sedar • Thanksgiving • Chanukah

- Delicatessen Platters (All first cut meats)
- Sloppy Joes
- New Item: All White Meat Turkey Sloppy Joes
- Fresh Vegetable Platters
- Dessert Trays
- Candy Trays
- Fresh Fruit Platters
- Cold Canapes
- Smokey Joes
- Appetizing Fish Platters
- Carved Turkeys
- Chopped Liver Molds
- Hot & Cold Hors D'oeuvres
- Poached Salmon Platters
- Hot Chafing Dishes
- Sandwich Platters
- 3 Foot Hero

Add to your affair by including an OMELETTE or WAFFLE STATION

Visit us on the web at:

www.DeliKingLinden.com

(908) 925-3909

Call for our 16 page Catering Menu • We Will Be Happy to Quote Prices ON THE PHONE!

FREE DELIVERY ANYWHERE IN NEW JERSEY

- ★ Kosher Restaurant
- ★ Kosher Delicatessen
- ★ Appetizing & Smoked Fish
- ★ Full Service Caterer



The Finest in Kosher Catering

*Whether it's a Small House Party,
Sunday Brunch, Bar/Bat Mitzvah,
Wedding, Kiddush, Bris, Baby Naming
or Corporate Event*

Signature Creations Caterers

*Will Take Meticulous Care of Every
Detail from Start to Finish*

www.SignatureCreationsCaterers.com

(908) 486-7889

Culinary Chefs on Staff *

Professional Service * Custom Designed Menu



Marc I. Feldman, D.D.S. S.P. #2458
Laurence D. Sussman, D.D.S. S.P. #3101
Marc L. Weil, D.D.S. S.P. #3306
Stuart H. Meyer, D.D.S. S.P. #3439
John M. McElroy, D.M.D. S.P. #3894

CENTRAL JERSEY ORAL AND MAXILLOFACIAL SURGERY, P.A.

Wisdom Teeth • Dental Implants • Jaw Surgery

Matawan Professional Building
158 Main Street
Matawan, NJ 07747
732-566-7648

1315 Allaire Ave. & Hwy. 35
Ocean, NJ 07712
732-531-4400

Wemrock Professional Mall
509 Stillwells Corner Road
Freehold, NJ 07728
732-431-4800

Arpami Pavilion
2101 Route 516, Suite C
Old Bridge, NJ 08857
732-679-0800



Alan G. Stern, DDS
fine restorative & cosmetic dentistry

732.493.8030

804 West Park Ave. • Ocean, New Jersey 07712

www.AlanSternDDS.com • info@AlanSternDDS.com

LAWRENCE H. SHAPIRO

COUNSELOR AT LAW

ANSELL GRIMM & AARON

A PROFESSIONAL CORPORATION

**1500 Lawrence Avenue
CN 7807
Ocean, New Jersey 07712**

732-922-1000

Fax 732-922-6161

E-mail: lhs@ansellgrimm.com

Marc J. Comer
ATTORNEY AT LAW

MANDELBAUM, SALSBURG,
LAZARIS & DISCENZA
A PROFESSIONAL CORPORATION

12 CHRISTOPHER WAY, SUITE 200
EATONTOWN, NJ 07724

PHONE (732) 933.1515
FAX (732) 933.5551

E-MAIL: MCOMER@MSGLED.COM

Exquisite Caterers

EXCLUSIVE CATERERS AT MARLBORO JEWISH CENTER

**Let Exquisite Caterers make your event
The party of your dreams!**

Bar/Bat Mitzvah • Weddings • Kiddush's
Baby Namings • Briss • Corporate Events

Off-Premise
Kosher Catering
Specialists

732-294-0032 | ExquisiteCaterers.com | Howard Heiberger



**BLOOMFIELD-COOPER
JEWISH CHAPELS**

*Our "Jewish Family" Serving
Your Jewish Family Since 1978*

LAKEWOOD OCEAN MANALAPAN
Monuments for all Jewish Cemeteries

1-800-247-5235

Les Bloomfield, Manager NJ Lic. # 4074 Albert Bloomfield, Manager NJ Lic# 4074



WithumSmith+Brown, PC
Certified Public Accountants and Consultants

331 Newman Springs Road . Suite 125
Red Bank, New Jersey 07701-6765 USA
732 842 3113 . fax 732 741 7292 . cell 732 241 1559

Barry D. Shapiro, CPA Partner
bshapiro@withum.com . www.withum.com

**Solomon
Schechter
Day School
of Greater
Monmouth
County**

It All STARTS Here.

**Mommy and Me Classes
Forming Now
2 locations:**
Solomon Schechter Day
School, Marlboro

New Location
Congregation Torat-El,
Oakhurst

6-week session includes
crafts, storytime, music &
special shabbat program

PJ Library Storytime
Sundays at Schechter
Perfectly designed for
working parents and
grandparents. 10-11 a.m.

Nov. 11 - Thanks & Giving
Dec. 2 - Happy Chanukah

Contact Linda Glickstein
732-431-5525
www.ssgmc.com/ad27

22 School Road East • Marlboro, NJ 07746 • 732.431.5525



The Write Stuff

Invitations and More!

Always Discounted

Debbie Segerman
7 Copperfield Court

Ocean, New Jersey 07712

Phone: 732-922-9535
Fax: 732-922-9539

E-Mail: InviteLady1@aol.com

Studio (732) 531-5042
Deal / Ocean Twp. Area

JUDITH A MEISELS

Nationally Certified Teacher of Piano



Piano Instructions - All Levels & Ages

talent development - technique - harmony - eartraining - music history
theory - ensemble - recitals - conservatory curriculum & college prep

Westminster Choir College, NJ - Columbia U. Teachers College, NY
Franz Liszt Academy, Hungary - Budapest Conservatory, Hungary
Featured in Marquis Who's Who Biographical Publications

Member of:
MTNA & NJMTA and other Prestigious Piano Teachers Organizations
Over 45 Years of Teaching Experience

The CTE Sisterhood Gift Shop is now Not just judaica

Featuring judaica by **Michael Aram & Gary Rosenthal**

For the first time we are now offering beautiful tableware for your home and all occasions.



Think of us first for Weddings, Housewarmings, Bar/Bat Mitzvahs and all other joyous simchas.

Don't see exactly what you want ...we can special order any item!

Indulge yourself or someone special with a new gift for Chanukah.

We discount! We now accept all major credit cards for your convenience!

EYEDESIGN

LINDA COHEN

90 BROAD STREET-RED BANK,
NEW JERSEY 07701

WWW.EYEDESIGNPA.COM

TEL: 732-530-6865 • FAX: 732-530-6846

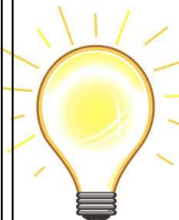
*This space is available for
your advertising needs.*

Lic. No. 9660A

L.U. ELECTRIC, LLC

JAKOB ELSHTEIN

Residential * Commercial * Industrial



259 Morris Ave. Phone: (732) 222-8095
Long Branch (732) 493-4683
New Jersey 07740 Fax: (732) 222-1457

E-mail: LUELECTRIC@HOTMAIL.com



**STERNS
TRAILER
RENTAL**
Fred Stern



**P.O. Box 99,
Farmingdale, N.J. 07727
1-800-627-8376**

Congregation Torat El
Jersey Shore Jewish Center
301 Monmouth Road
Oakhurst, NJ 07755
732-531-4410
www.torat-el.org

**NON PROFIT
US POSTAGE PAID
PERMIT #49
RED BANK, NJ
07701**

DATED MATERIAL PLEASE DELIVER IMMEDIATELY

ADDRESS SERVICE REQUESTED